

18.92

11.58

S

12.10^s

10.75

25

25

5.82

9

2.04

2.0

3.40

16.85

8

6.15

25

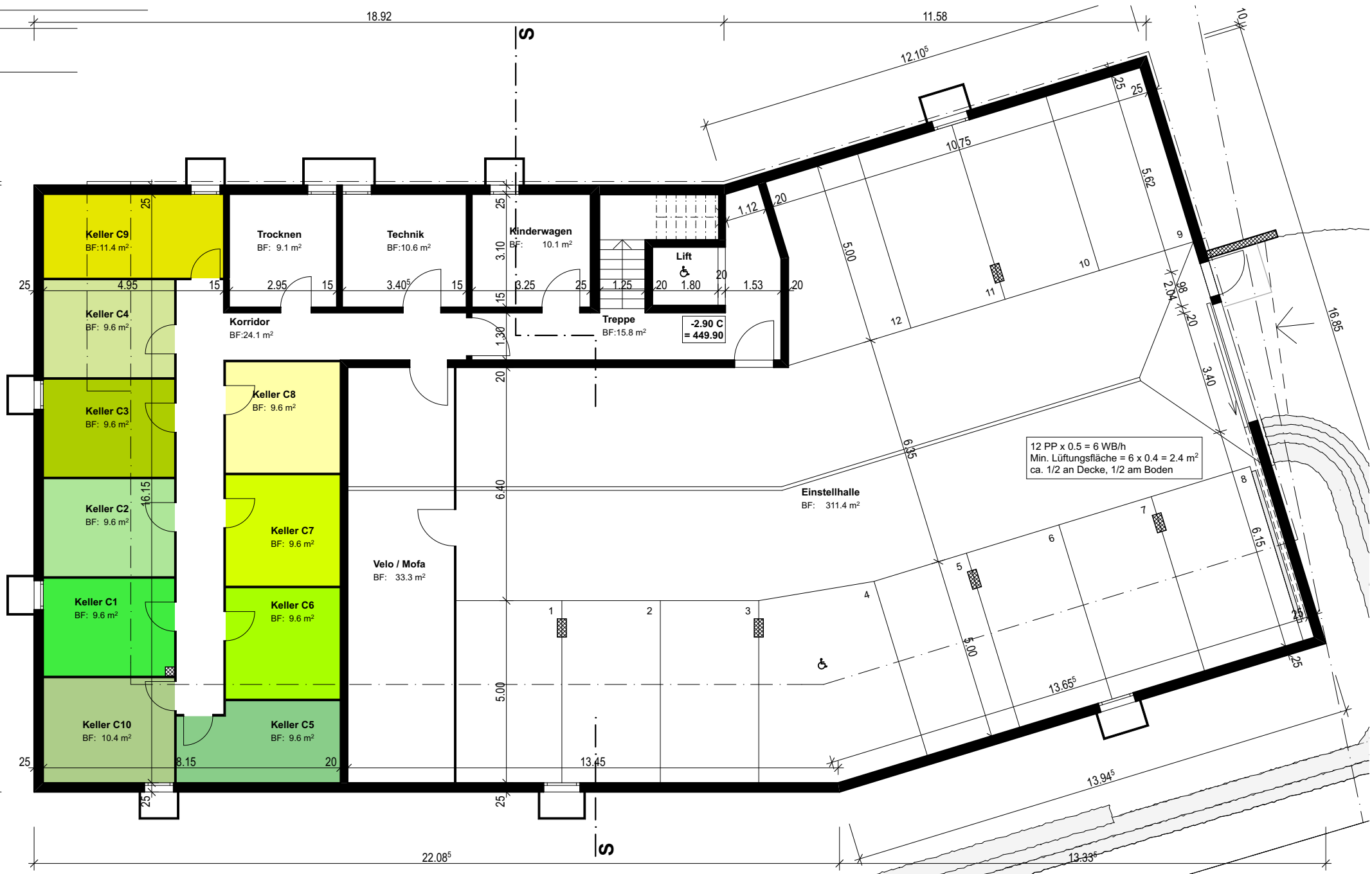
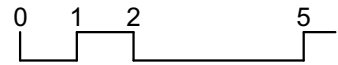
13.65^s

13.94^s

13.33^s

22.08^s

S



Keller C9
BF: 11.4 m²

Trocknen
BF: 9.1 m²

Technik
BF: 10.6 m²

Kinderwagen
BF: 10.1 m²

Lift
1.80

-2.90 C
= 449.90

Treppe
BF: 15.8 m²

Korridor
BF: 24.1 m²

Keller C8
BF: 9.6 m²

Einstellhalle
BF: 311.4 m²

Velo / Mofa
BF: 33.3 m²

12 PP x 0.5 = 6 WB/h
Min. Lüftungsfläche = 6 x 0.4 = 2.4 m²
ca. 1/2 an Decke, 1/2 am Boden

Keller C4
BF: 9.6 m²

Keller C3
BF: 9.6 m²

Keller C2
BF: 9.6 m²

Keller C1
BF: 9.6 m²

Keller C10
BF: 10.4 m²

Keller C7
BF: 9.6 m²

Keller C6
BF: 9.6 m²

Keller C5
BF: 9.6 m²